



SAN ANTONIO WATER SYSTEM  
San Antonio River Outfall Pipeline Project No. 2B  
SAWS Job No. 13-4510 (Sewer)  
Solicitation No. CD-B-14-065-MR

ADDENDUM NO. 2  
October 23, 2014

**TO BIDDER OF RECORD:**

The following changes, additions, and/or deletions are hereby made a part of the Contract Documents for the construction of the San Antonio River Outfall Pipeline Project No. 2B, for the San Antonio Water System, San Antonio, Texas, dated September 2014, as fully and completely as if the same were set forth therein.

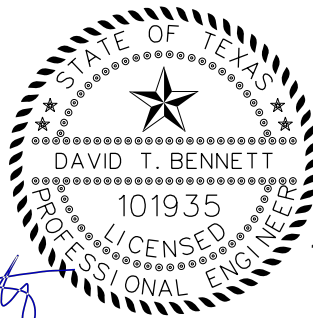
**PART 1 - BIDDING AND CONTRACT DOCUMENTS**

1. WAGE DECISIONS: DELETE wage decisions for Construction Type: Heavy Pipeline – On-Shore Pipeline Construction and Construction Type: Heavy Tunnel in their entirety.

**PART 2 - DRAWINGS**

1. SHEET SDT3 – STRUCTURAL DETAILS III: REPLACE this sheet in its entirety with the attached sheet.

ALL BIDDERS SHALL ACKNOWLEDGE RECEIPT OF ADDENDUM NO. 2 IN THE BID FORM AND BY HIS/HER SIGNATURE AFFIXED HERETO AND TO FILE SAME AS AN ATTACHMENT TO HIS/HER BID. BID FORMS SUBMITTED WITHOUT THIS ACKNOWLEDGEMENT WILL BE CONSIDERED INFORMAL.



10-23-14

**David T. Bennett, P.E.**

Freese and Nichols, Inc.

FREESE AND NICHOLS, INC.  
TEXAS REGISTERED  
ENGINEERING FIRM  
F-2144

**ACKNOWLEDGEMENT BY BIDDER**

THE UNDERSIGNED ACKNOWLEDGES RECEIPT OF THIS ADDENDUM NO. 2 AND THE BID SUBMITTED HEREWITH IS IN ACCORDANCE WITH THE INFORMATION AND STIPULATION SET FORTH.

---

Date

Signature of bidder

Appended hereto and part of Addendum No. 2 are:

1. PLAN SHEET SDT3

END OF ADDENDUM NO. 2



10-23-14  
Texas Registered Engineering Firm F-1741

No.	Date	Revisions
1	09/26/14	ISSUED AS BID
2	10/22/14	NOTES REVISION

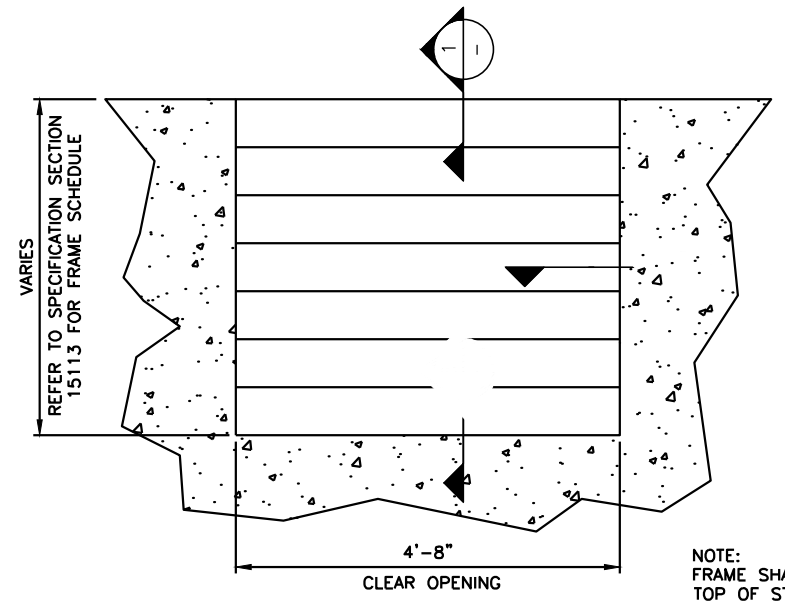
Date: SEPT 2014  
Designed by: JPW  
Drawn by: PEC  
Checked by: JPW  
Scale: NTS

CP&Y, Inc.  
CP&Y, Inc.  
TBPE FIRM No. F-1741

4040 Broadway Street, Suite 600  
Houston, Texas 77020  
Phone - (210) 298-3300  
Fax - (210) 298-3801

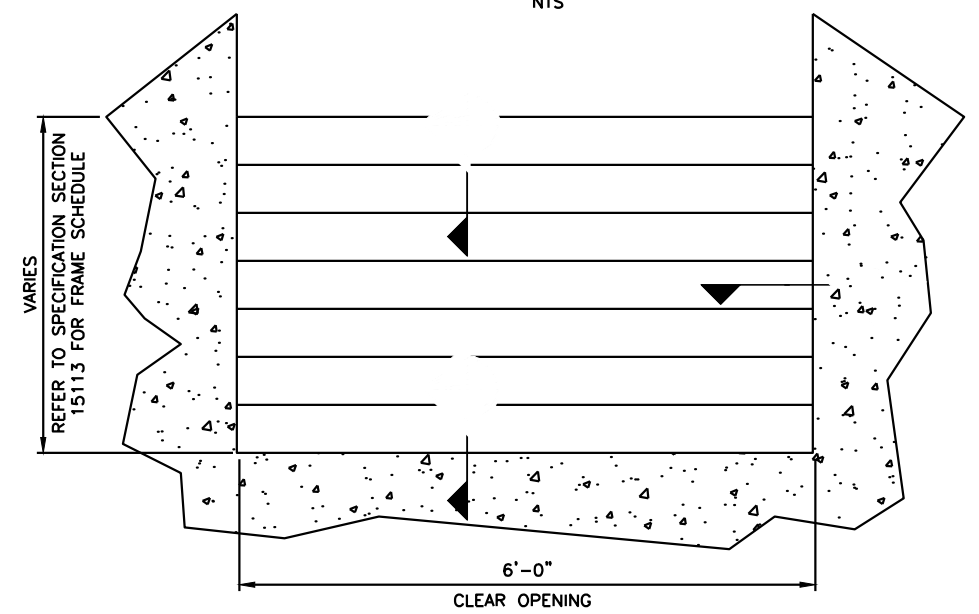
SAN ANTONIO  
WATER SYSTEM

SAWS JOB NO. 13-4510 (SS)  
SAN ANTONIO RIVER OUTFALL PIPELINE,  
PROJECT NO. 2B  
STRUCTURAL DETAILS III



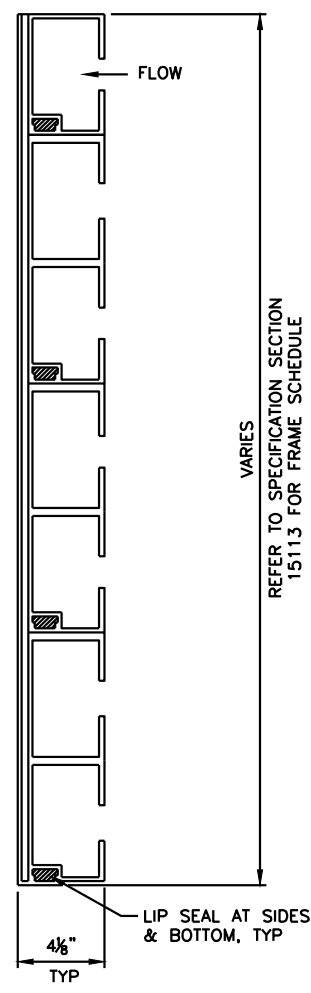
INLET STRUCTURE  
NTS

NOTE: FRAME SHALL EXTEND TO TOP OF STRUCTURE

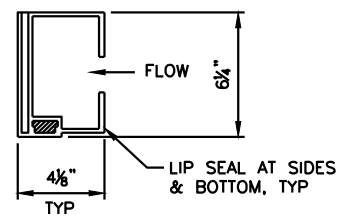


OUTLET STRUCTURE  
NTS

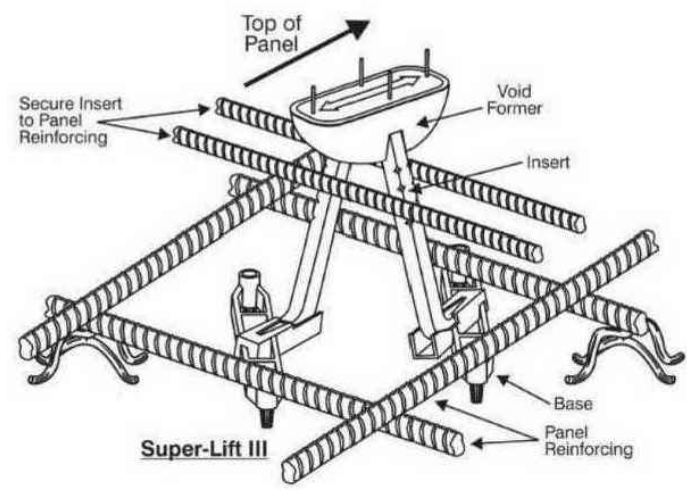
NOTE: FRAME SHALL EXTEND TO TOP OF STRUCTURE



1 42" HIGH SECTION  
NTS

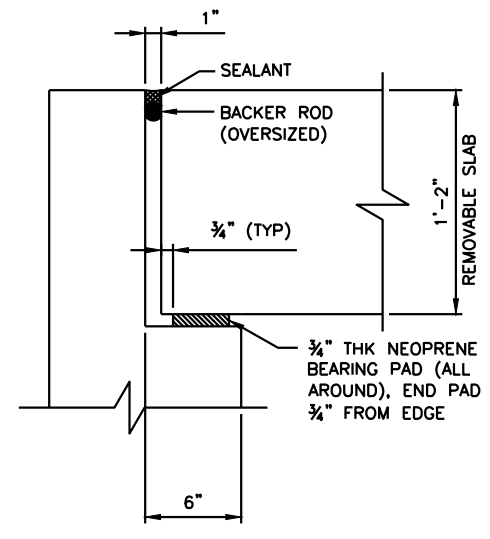


2 6" HIGH SECTION  
NTS

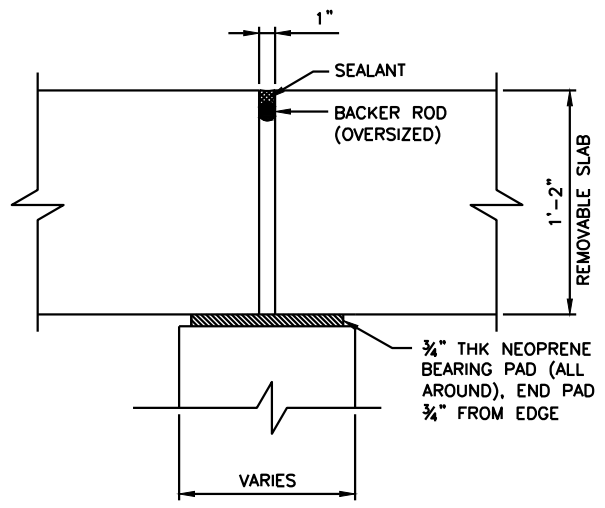


- NOTES:
- LIFTING HOOK INSERTS SHALL BE SUPER-LIFT III INSERTS BY MEADOW BURKE.
  - LIFTING HOOK INSERTS SHALL HAVE A WORKING TENSILE AND SHEAR CAPACITY OF 22K.
  - PROVIDE 4 LIFTING INSERTS PER TOP SLAB. REFER TO STRUCTURAL SHEETS FOR LOCATIONS.

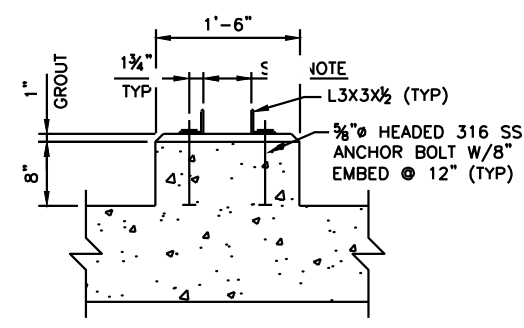
B LIFTING HOOK INSERT  
NTS



C SLAB BEARING DETAIL  
NTS

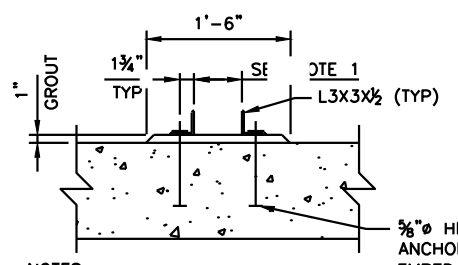


D ROOF SLAB JOINT DETAIL  
NTS



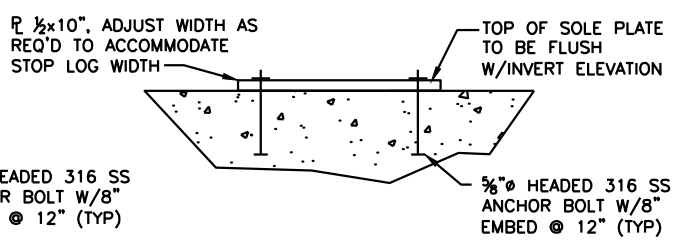
NOTES: SPACING PER MANUFACTURER, 6" MAX.

3 SECTION  
NTS



- NOTES:
- SPACING PER MANUFACTURER, 6" MAX.
  - STAGGER ANCHOR BOLTS ON OPPOSITE SIDES OF THE CENTER WALL.

4 SECTION  
NTS



NOTE: STAINLESS STEEL STOP LOG DETAILS ARE ILLUSTRATIVE ONLY. STOP LOG DETAILS SHALL BE DETERMINED FROM APPROVED MANUFACTURER'S INFORMATION.

5 SECTION  
NTS

A STOP LOG DETAILS  
NTS